



**CLAREMONT YACHT CLUB INC.**

**SAILING PROGRAMME  
FOR  
KEELBOATS  
& DINGHIES  
2020 - 2021**

**SAILING INSTRUCTIONS  
FIXTURES & COURSES**



# CLAREMONT YACHT CLUB INC.

4 Victoria Ave, Claremont WA 6010

PO Box 11, Claremont WA 6910

Phone: 9384 8226

Email: [reception@claremontyachtclub.org.au](mailto:reception@claremontyachtclub.org.au)

## COMMITTEE OFFICERS

Commodore .....	Darren Chatfield
Vice Commodore.....	Richard Boykett
Rear Commodore Power .....	Rob Ryan
Rear Commodore Sail.....	Todd Whitfield
Rear Commodore Dinghies .....	Dominic Papaluca
Treasurer .....	Dominic Papaluca

## SAIL COMMITTEE

**Todd Whitfield**  
Robert Jeffery  
Peter Boykett  
Ann Caddick  
Kevin Kiddey  
Wilma Poland  
Arthur Poland  
Richard Boykett  
Dominic Papaluca

## DINGHY COMMITTEE

**Dominic Papaluca**  
Walter Reeves  
Malcolm McKercher Jnr  
John D Ryan  
Nigel Paul  
Wendy Campbell  
Don Page  
Helen Ramsay

# DINGHIES

Don't be late for your start. Races will start even if you are still on the beach.

Optimist 1000 hrs  
Mirror 1005 hrs  
Laser 1015 hrs

Your class flag goes up with 5 mins to go;  
"The "p" flag goes up with 4 mins to go"  
"The "p" flag comes down with 1 min to go"

When your class flag comes down – GO!

However, when any other Association Heats are held at CYC, the visiting fleets start first. Watch the flags for your division – don't go unless you see your flag!

We require at least 4 dinghies in order to justify a separate start. If there are not enough yachts in any fleet or division, then there will be a combined division. Look for the "C" flag where your division flag would normally be.

## OCTOBER

10-Oct-20	SAT	1440	Club Opening Day
11-Oct-20	SUN	1000	Dinghy Opening Day Trophy
18-Oct-20	SUN	1000	Consistency
25-Oct-20	SUN	1000	Windward Series 1

## NOVEMBER

01-Nov-20	SUN	1000	Consistency
08-Nov-20	SUN	1000	Club Championship – Race 1
15-Nov-20	SUN	1000	Consistency
22-Nov-20	SUN	1000	Club Championship – Race 2
29-Nov-20	SUN	1000	Consistency

## DECEMBER

06-Dec-20	SUN	1000	Club Championship 3
13-Dec-20	SUN	1000	Handicap race 1
20-Dec-20	SUN	1000	Consistency

## JANUARY

10-Jan-21 SUN 1000 Windward Series 2

17-Jan-21 SUN 1000 Consistency

31-Jan-21 SUN 1000 Trapezoid race 1

## FEBRUARY

07-Feb-21 SUN 1000 Club Championship 4

14-Feb-21 SUN 1000 Consistency

21-Feb-21 SUN 1000 Club Championship 5

## MARCH

07-Mar-21 SUN 1000 Windward Series 3

14-Mar-21 SUN 1000 Club Championship 6

21-Mar-21 SUN 1400 Commodores Cup – 2.00pm start

28-Mar-21 SUN 1000 Handicap race 2

## APRIL

11-Apr-21 SUN 1000 Consistency

18-Apr-21 SUN 1000 Dinghy Closing Day Trophy (Trapezoid 2)

## MAY

15-May-21 1900 Combined Prize Night

# KEELBOAT

The scheduled start-time sequence for Summer racing begins:

<b>Combined Fleet</b>	<b>1400 hrs</b>
5 minutes to go:	Your coloured Division flag goes <b>up</b>
4 minutes to go:	"The "P" flag goes <b>up</b>
1 minute to go:	"The "P" flag comes <b>down</b>
GO!	When your Division flag comes <b>down</b>

However, when Spacesailer 22, Red Witch, or any other Association Heats are held at CYC, the visiting fleets start **FIRST**. Watch the flags for your division – don't go unless you see your flag!

We require at least 4 yachts in order to justify a separate start. If there are not enough yachts in any fleet or division, then there will be a combined division. Look for the "C" flag where your division flag would normally be (which means the whole lot of us are starting together) or else you may see two (or more) division flags together on the one halyard – which means those divisions start together.

**\*DENOTES A CYC CONSISTENCY RACE-Yachts sailing in outside Association Events on these dates can apply to Starter/ Handicapper for average consistency points for the event that they are away from CYC.**

## Inter-Club Series

This season CYC is collaborating with Perth Flying Squadron YC, Nedlands YC, and East Fremantle YC, for a choice of races from two Inter-Club Race Series, The Melville Water Series and the Tri-Club Series; one held at each Club. Consistency Points will be awarded to yachts competing at PFS, EFYC and NYC for these events so we ask that you participate in these events, as the members from these Clubs have been supporting our Commodore's Cup Event for some time now.

## Melville Water Series

**Race 1 EFYC** – Melville Water Series-Heat 1 - Sunday 1st November 2020

**Race 2 EFYC** – Melville Water Series-Heat 2 - Sunday 22nd November 2020

**Race 3 EFYC** – Melville Water Series-Heat 3 - Sunday 21st February 2021

**Race 4 CYC** – Commodore's Cup Race - Sunday 21st March 2021

## Tri-Club Series

**Race 1 NYC** – HMAS Perth Memorial Regatta – Sunday 21st February 2021

**Race 2 PFSYC** – Wally Pickford Memorial Marathon Race – Sunday 7th March 2021

**Race 3 CYC** – Commodore's Cup Race – Sunday 21st March 2021

## OCTOBER

10-Oct-20 SUN 1440 \*KEELBOAT OPENING DAY

Special Race Programme to be advertised

14-Oct-20 WED 1825 Opening Twilight Race

17-Oct-20 SAT 1400 \*CLUB START

21-Oct-20 WED 1825 Twilight

24-Oct-20 SAT 1400 \*CLUB START

28-Oct-20 WED 1825 Twilight

31-Oct-20 SAT 1400 \*CLUB START

## NOVEMBER

01 Nov-20 SUN EFYC – Melville Water Series Heat 1

04 Nov-20 WED 1825 Twilight

07-Nov-20 SAT 1400 \*CLUB START

11-Nov-20 WED 1825 Twilight

14-Nov-20 SAT 1400 \*HANDICAP START

15-Nov-20 SUN 0900 Discover Sailing Day at CYC

18-Nov-20 WED 1825 Twilight

21-Nov-20 SAT 1400 \*CLUB START

22-Nov-20 SUN \*Race 1 of Inter-Club Series – EFYC – Melville Water Series Heat 2

25-Nov-20 WED 1825 Twilight

28-Nov-20 SAT 1400 \*RIVER START

SS22 Association Championship Heat –CYC

## DECEMBER

02-Dec-20 WED 1825 Twilight

05-Dec-20 SAT 1400 \*CLUB START

09-Dec-20 WED 1825 Twilight

12-Dec-20 SAT 1400 \*CLUB START

16-Dec-20	WED	1825	"Christmas" Twilight
19-Dec-20	SAT		NO RACING AT CYC
23-Dec-20	WED		NO RACING AT CYC
26-Dec-20	SAT		NO RACING AT CYC
30-Dec-20	WED		NO RACING AT CYC Swan River closed until 6-1-21

## JANUARY

02-Jan-21	SAT		NO RACING AT CYC
06-Jan-21	WED	1825	Twilight
09-Jan-21	SAT	1400	*CLUB START
13-Jan-21	WED	1825	Twilight
16-Jan-21	SAT	1400	*CLUB START
20-Jan-21	WED	1825	"Australia Day" Theme Twilight
23-Jan-21	SAT	1400	*CLUB START "Australia Day Race"
27-Jan-21	WED	1825	Twilight
29-Jan-21	FRI		PFSYC – Parmelia Night Race
30-Jan-21	SAT	1400	*CLUB START

## FEBRUARY

03-Feb-21	WED	1825	Twilight
06-Feb-21	SAT	1400	*CLUB START
10-Feb-21	WED	1825	Twilight
13-Feb-21	SAT	1400	*HANDICAP START, Harry Laurie Memorial Trophy
17-Feb-21	FRI	1900	Twilight
20-Feb-21	SAT	1400	*CLUB START SHORT COURSE RACING – (MAXIMUM 3 RACES)
21-Feb-21	SUN		*Race 2 of Inter-Club Series– NYC – HMAS Perth Memorial Regatta EFYC – Melville Water Series – Heat 3 including SS22 Association Championship Heat – EFYC
24-Feb-21	WED	1825	Twilight
27-Feb-21	SAT		NO SAILING AT CYC – Long Weekend

## MARCH

03-Mar-21	WED	1825	Twilight
06-Mar-21	SAT	1400	*CLUB START
07-Mar-21	SUN	1100	*Race 3 of Inter – Club Series PFSYC – “Wally Pickford” Marathon Race
10-Mar-21	WED	1825	Twilight
13-Mar-21	SAT	1400	*CLUB START – Ladies Skipper Race
17-Mar-21	WED	1825	Twilight
20-Mar-21	SAT	1400	No racing at CYC – See 21st March
21-Mar-21	SUN	1400	*Race 4 of Inter – Club Series CYC – COMMODORE’S CUP <i>Farr 9.2 Association</i> visiting SS22 Association Championship Heat – CYC EFYC – Melville Water Series – Heat 4
24-Mar-21	WED	1825	Twilight
27-Mar-21	SAT	1400	*CLUB START
31-Mar-21	WED	1825	Twilight “Easter”

## APRIL

03-Apr-21	SAT	1400	NO SAILING AT CYC – Easter Weekend
07-Apr-21	WED	1825	Twilight
10-Apr-21	SAT	1400	*CLUB START
14-Apr-21	WED	1825	Twilight
17-Apr-21	SAT	1400	*CLUB START – CLOSING DAY
25-Apr-21	SUN	1600	ANZAC DAY TWILIGHT RACE

## MAY

15-May-21	SAT	1900	Combined Keelboat and Dinghy Prize Night
-----------	-----	------	---



## WINTER "FROSTBITE" SERIES 2021

02-May-21	SUN	1400	Winter Frostbite Race (combined Keelboat/Dinghy)
16-May-21	SUN	1400	Winter Frostbite Race (combined Keelboat/Dinghy)
06-Jun-21	SUN	1400	Winter Frostbite Race (combined Keelboat/Dinghy)
20-Jun-21	SUN	1400	Winter Frostbite Race (combined Keelboat/Dinghy)
04-Jul-21	SUN	1400	Winter Frostbite Race (combined Keelboat/Dinghy)
18-Jul-21	SUN	1400	Winter Frostbite Race (combined Keelboat/Dinghy)
01-Aug-21	SUN	1400	Winter Frostbite Race (combined Keelboat/Dinghy)
15-Aug-21	SUN	1400	Winter Frostbite Race combined Keelboat/Dinghy)
05-Sep-21	SUN	1400	Winter Frostbite Race (combined Keelboat/Dinghy)
19-Sep-21	SUN	1400	Winter Frostbite Race (combined Keelboat/Dinghy)

(note: all Winter Frostbite races only use twilight courses  
15 and 16 – watch the flags)

## COURSES

### Course No. 6W - [9.6 NM]

#### Pendant 6 Black, White Horizontals

1. Across Start Line (21A) in a Westerly Direction
2. Burnside Buoys (21) & (21B) to Port
3. College Buoy (23) to Starboard
4. Nth Pt Walter Buoy (26A) to Port
5. Dome buoy (30) to Port
6. Mosman Buoy (14) to Port
7. Suicide Buoy (13) to Port
8. Burnside Spit (58) to Starboard
9. College Buoy (23) to Starboard
10. Mosman Buoy (14) to Port
11. Suicide Buoy (13) to Port
12. Burnside Spit (58) to Starboard
13. Claremont Buoy (23A) to Port
14. Across Finish Line (21A) in a Westerly Direction

### Course No. 6E EASTERLY

#### Pendant 6 Black, White Horizontals

1. Across Start Line (21A) in an Easterly Direction
2. College Buoy (23) to Starboard
3. Nth Pt Walter Buoy (26A) to Port
4. Dome buoy (30) to Port
5. Mosman Buoy (14) to Port
6. Suicide Buoy (13) to Port
7. Burnside Spit (58) to Starboard
8. College Buoy (23) to Starboard
9. Mosman Buoy (14) to Port
10. Suicide Buoy (13) to Port
11. Burnside Spit (58) to Starboard
12. Across Finish Line (21A) in an Easterly Direction

### Course No. 6R RIVER START

#### Pendant 6 Black, White Horizontals

1. Across River Start Line in a S-Westerly Direction
2. Mosman Buoy (14) to Port
3. Suicide Buoy (13) to Port
4. West & North Pt Walter Beacons to Starboard
5. Dome buoy (30) to Port
6. Mosman Buoy (14) to Port
7. Suicide Buoy (13) to Port
8. Burnside Spit (58) to Starboard
9. College Buoy (23) to Starboard
10. Mosman Buoy (14) to Port
11. Suicide Buoy (13) to Port
12. Burnside Spit (58) to Starboard
13. Claremont Buoy (23A) to Port
14. Across Finish Line (21A) in a Westerly Direction

## COURSES

### Course No. 7W - [9.7 NM]

#### Pendant 7 Yellow, Red, Horizontals

1. Across Start Line (21A) in a Westerly Direction
2. Burnside Buoys (21) & (21B) to Port
3. College Buoy (23) to Starboard
4. Nth Pt Walter Buoy (26A) to Port
5. Miller Buoy (28) to Port
6. Dolphin West Buoy (42A) to Starboard
7. Bricklanding Buoys (33A & B) to Starboard
8. Dome Buoy (30) to Port
9. Mosman Buoy (14) to Port
10. Suicide Buoy (13) to Port
11. Burnside Spit (58) to Starboard
12. College Buoy (23) to Starboard
13. Black (54) Middle (55) Scotch (57) to Starboard
14. Burnside (58) Spits
15. Claremont Buoy (23A) to Port
16. Across Finish Line (21A) in a Westerly Direction

### Course No. 7E EASTERLY

#### Pendant 7 Yellow, Red, Horizontals

1. Across Start Line (21A) in an Easterly Direction
2. College Buoy (23) to Starboard
3. Nth Pt Walter Buoy (26A) to Port
4. Miller Buoy (28) to Port
5. Dolphin West Buoy (42A) to Starboard
6. Bricklanding Buoys (33A & B) to Starboard
7. Dome Buoy (30) to Port
8. Mosman Buoy (14) to Port
9. Suicide Buoy (13) to Port
10. Burnside Spit (58) to Starboard
11. College Buoy (23) to Starboard
12. Black (54) Middle (55) Scotch (57) to Starboard
13. Burnside (58) Spits
14. College Buoy (23) to Starboard
15. Across Finish Line (21A) in an Easterly Direction

### Course No. 7R RIVER START

#### Pendant 7 Yellow, Red, Horizontals

1. Across River Start Line in a S-Westerly Direction
2. Mosman Buoy (14) to Port
3. Suicide Buoy (13) to Port
4. West & North Pt Walter Beacons to Starboard
5. Miller Buoy (28) to Port
6. Dolphin West Buoy (42A) to Starboard
7. Bricklanding Buoys (33A & B) to Starboard
8. Dome Buoy (30) to Port
9. Mosman Buoy (14) to Port
10. Suicide Buoy (13) to Port
11. Burnside Spit (58) to Starboard
12. College Buoy (23) to Starboard
13. Black (54) Middle (55) Scotch (57) to Starboard
14. Burnside (58) Spits
15. Claremont Buoy (23A) to Port
16. Across Finish Line (21A) in a Westerly Direction

## COURSES

### Course No. 8W - [10.5NM]

#### Pendant 8 White, Red Cross

1. Across Start Line (21A) in a Westerly Direction
2. Burnside Buoys (21) & (21B) to Port
3. College Buoy (23) to Starboard
4. Mosman Buoy (14) to Port
5. Suicide Buoy (13) to Port
6. Bishop Buoy (74) to Port
7. Mosman Buoy (14) to Port
8. Suicide Buoy (13) to Port
9. Miller Buoy (28) to Port
10. Dome Buoy (30) to Port
11. Mosman Buoy (14) to Port
12. Suicide Buoy (13) to Port
13. Burnside Spit (58) to Starboard
14. Claremont Buoy (23A) to Port
15. Across Finish Line (21A) in a Westerly Direction

### Course No. 8E EASTERLY

#### Pendant 8 White, Red Cross

1. Across Start Line (21A) in an Easterly Direction
2. College Buoy (23) to Starboard
3. Mosman Buoy (14) to Port
4. Suicide Buoy (13) to Port
5. Bishop Buoy (74) to Port
6. Mosman Buoy (14) to Port
7. Suicide Buoy (13) to Port
8. Miller Buoy (28) to Port
9. Dome Buoy (30) to Port
10. Mosman Buoy (14) to Port
11. Suicide Buoy (13) to Port
12. Burnside Spit (58) to Starboard
13. Across Finish Line (21A) in an Easterly Direction

### Course No. 8R RIVER START

#### Pendant 8 White, Red Cross

1. Across River Start Line in a S-Westerly Direction
2. Mosman Buoy (14) to Port
3. Suicide Buoy (13) to Port
4. Bishop Buoy (74) to Port
5. Mosman Buoy (14) to Port
6. Suicide Buoy (13) to Port
7. Miller Buoy (28) to Port
8. Dome Buoy (30) to Port
9. Mosman Buoy (14) to Port
10. Suicide Buoy (13) to Port
11. Burnside Spit (58) to Starboard
12. Claremont Buoy (23A) to Port
13. Across Finish Line (21A) in a Westerly Direction

## COURSES

### Course No.9W [13.7NM]

#### Pendant 9 Red, White, Black & Yellow Qtrs

- |     |  |              |
|-----|--|--------------|
| 1.  | Across Start Line (21A) in a Westerly Direction  |              |
| 2.  | Burnside Buoys (21) & (21B)                      | to Port      |
| 3.  | College Buoy (23)                                | to Starboard |
| 4.  | Mosman Buoy (14)                                 | to Port      |
| 5.  | Suicide Buoy (13)                                | to Port      |
| 6.  | Miller Buoy (28)                                 | to Port      |
| 7.  | Dolphin West Buoy (42A)                          | to Starboard |
| 8.  | Bricklanding Buoys (33A & B)                     | to Starboard |
| 9.  | Mosman Buoy (14)                                 | to Port      |
| 10. | Suicide Buoy (13)                                | to Port      |
| 11. | Burnside Spit (58)                               | to Starboard |
| 12. | College Buoy (23)                                | to Starboard |
| 13. | Mosman Buoy (14)                                 | to Port      |
| 14. | Suicide Buoy (13)                                | to Port      |
| 15. | Burnside Spit (58)                               | to Starboard |
| 16. | Claremont Buoy (23A)                             | to Port      |
| 17. | Across Finish Line (21A) in a Westerly Direction |              |

### Course No.9E EASTERLY

#### Pendant 9 Red, White, Black & Yellow Qtrs

- |     |   |              |
|-----|---|--------------|
| 1.  | Across Start Line (21A) in an Easterly Direction  |              |
| 2.  | College Buoy (23)                                 | to Starboard |
| 3.  | Mosman Buoy (14)                                  | to Port      |
| 4.  | Suicide Buoy (13)                                 | to Port      |
| 5.  | Miller Buoy (28)                                  | to Port      |
| 6.  | Dolphin West Buoy (42A)                           | to Starboard |
| 7.  | Bricklanding Buoys (33A & B)                      | to Starboard |
| 8.  | Mosman Buoy (14)                                  | to Port      |
| 9.  | Suicide Buoy (13)                                 | to Port      |
| 10. | Burnside Spit (58)                                | to Starboard |
| 11. | College Buoy (23)                                 | to Starboard |
| 12. | Mosman Buoy (14)                                  | to Port      |
| 13. | Suicide Buoy (13)                                 | to Port      |
| 14. | Burnside Spit (58)                                | to Starboard |
| 15. | Across Finish Line (21A) in an Easterly Direction |              |

### Course No.9R RIVER START

#### Pendant 9 Red, White, Black & Yellow Qtrs

- |     |   |              |
|-----|---|--------------|
| 1.  | Across River Start Line in a S-Westerly Direction |              |
| 2.  | Mosman Buoy (14)                                  | to Port      |
| 3.  | Suicide Buoy (13)                                 | to Port      |
| 4.  | Miller Buoy (28)                                  | to Port      |
| 5.  | Dolphin West Buoy (42A)                           | to Starboard |
| 6.  | Bricklanding Buoys (33A & B)                      | to Starboard |
| 7.  | Mosman Buoy (14)                                  | to Port      |
| 8.  | Suicide Buoy (13)                                 | to Port      |
| 9.  | Burnside Spit (58)                                | to Starboard |
| 10. | College Buoy (23)                                 | to Starboard |
| 11. | Mosman Buoy (14)                                  | to Port      |
| 12. | Suicide Buoy (13)                                 | to Port      |
| 13. | Burnside Spit (58)                                | to Starboard |
| 14. | Claremont Buoy (23A)                              | to Port      |
| 15. | Across Finish Line (21A) in a Westerly Direction  |              |

## COURSES

### Course No. 10W [11.8NM]

#### Pendant 1 over 0 Yellow, Red, Yellow Vert

1. Across Start Line (21A) in a Westerly Direction
2. Burnside Buoys (21) & (21B) to Port
3. College Buoy (23) to Starboard
4. Mosman Buoy (14) to Port
5. Mt Lyall Buoy (9) to Starboard
6. Blackwall Buoy (11) to Port
7. Miller Buoy (28) to Port
8. Dome Buoy (30) to Port
9. Mosman Buoy (14) to Port
10. Suicide Buoy (13) to Port
11. Burnside Spit (58) to Starboard
12. Claremont Buoy (23A) to Port
13. Across Finish Line (21A) in a Westerly Direction

### Course No. 10E EASTERLY

#### Pendant 1 over 0 Yellow, Red, Yellow Vert

1. Across Start Line (21A) in an Easterly Direction
2. College Buoy (23) to Starboard
3. Mosman Buoy (14) to Port
4. Mt Lyall Buoy (9) to Starboard
5. Blackwall Buoy (11) to Port
6. Miller Buoy (28) to Port
7. Dome Buoy (30) to Port
8. Mosman Buoy (14) to Port
9. Suicide Buoy (13) to Port
10. Burnside Spit (58) to Starboard
11. Across Finish Line (21A) in an Easterly Direction

### Course No.10R RIVER START

#### Pendant 1 over 0 Yellow, Red, Yellow Vert

1. Across River Start Line in a S-Westerly Direction
2. Mosman Buoy (14) to Port
3. Mt Lyall Buoy (9) to Starboard
4. Blackwall Buoy (11) to Port
5. Miller Buoy (28) to Port
6. Dome Buoy (30) to Port
7. Mosman Buoy (14) to Port
8. Suicide Buoy (13) to Port
9. Burnside Spit (58) to Starboard
10. Claremont Buoy (23A) to Port
11. Across Finish Line (21A) in a Westerly Direction

### Course No. 11W - [9.3NM]

#### Pendant 1 over 1

1. Across Start Line (21A) in a Westerly Direction
2. Burnside Buoys (21) & (21B) to Port
3. College Buoy (23) to Starboard
4. Mosman Buoy (14) to Port
5. Suicide Buoy (13) to Port
6. Burnside Spit (58) to Starboard
7. College Buoy (23) to Starboard
8. Mosman Buoy (14) to Port
9. Suicide Buoy (13) to Port
10. Burnside Spit (58) to Starboard

## COURSES

- |     |  |              |
|-----|--|--------------|
| 11. | College Buoy (23)                                | to Starboard |
| 12. | Mosman Buoy (14)                                 | to Port      |
| 13. | Suicide Buoy (13)                                | to Port      |
| 14. | Burnside Spit (58)                               | to Starboard |
| 15. | Claremont Buoy (23A)                             | to Port      |
| 16. | Across Finish Line (21A) in a Westerly Direction |              |

### Course No.11E EASTERLY

#### Pendant 1 over 1

- |     |   |              |
|-----|---|--------------|
| 1.  | Across Start Line (21A) in an Easterly Direction  |              |
| 2.  | College Buoy (23)                                 | to Starboard |
| 3.  | Mosman Buoy (14)                                  | to Port      |
| 4.  | Suicide Buoy (13)                                 | to Port      |
| 5.  | Burnside Spit (58)                                | to Starboard |
| 6.  | College Buoy (23)                                 | to Starboard |
| 7.  | Mosman Buoy (14)                                  | to Port      |
| 8.  | Suicide Buoy (13)                                 | to Port      |
| 9.  | Burnside Spit (58)                                | to Starboard |
| 10. | College Buoy (23)                                 | to Starboard |
| 11. | Mosman Buoy (14)                                  | to Port      |
| 12. | Suicide Buoy (13)                                 | to Port      |
| 13. | Burnside Spit (58)                                | to Starboard |
| 14. | Across Finish Line (21A) in an Easterly Direction |              |

### Course No.11R RIVER START

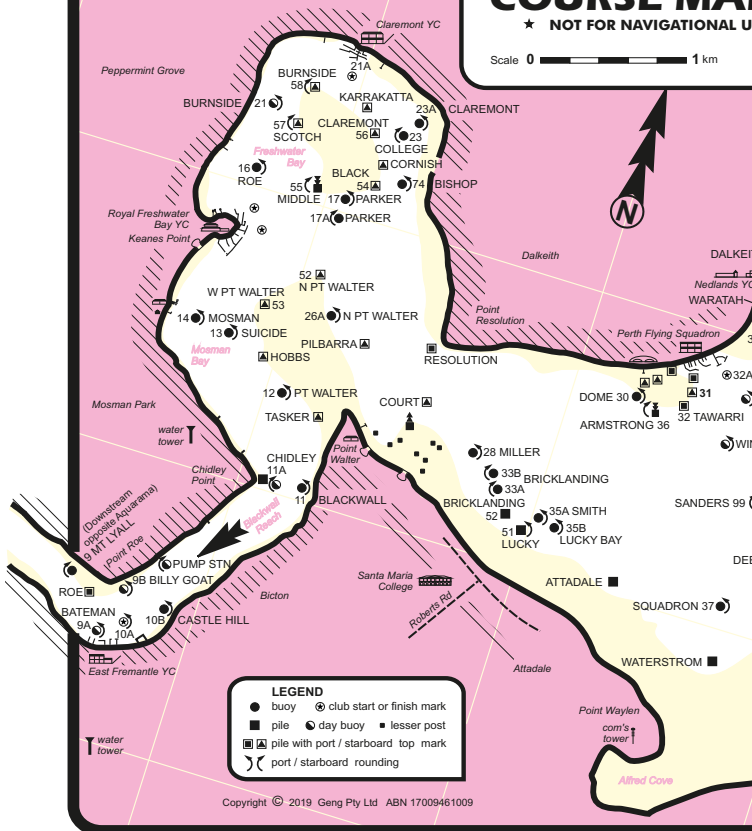
#### Pendant 1 over 1

- |     |   |              |
|-----|---|--------------|
| 1.  | Across River Start Line in a S-Westerly Direction |              |
| 2.  | Mosman Buoy (14)                                  | to Port      |
| 3.  | Suicide Buoy (13)                                 | to Port      |
| 4.  | Burnside Spit (58)                                | to Starboard |
| 5.  | College Buoy (23)                                 | to Starboard |
| 6.  | Mosman Buoy (14)                                  | to Port      |
| 7.  | Suicide Buoy (13)                                 | to Port      |
| 8.  | Burnside Spit (58)                                | to Starboard |
| 9.  | College Buoy (23)                                 | to Starboard |
| 10. | Mosman Buoy (14)                                  | to Port      |
| 11. | Suicide Buoy (13)                                 | to Port      |
| 12. | Burnside Spit (58)                                | to Starboard |
| 13. | Claremont Buoy (23A)                              | to Port      |
| 14. | Across Finish Line (21A) in a Westerly Direction  |              |

ORIGINAL, COLOUR,  
WATERPROOF, SELF ADHESIVE  
GUIDES AVAILABLE FROM  
MARINE RETAILERS

**GUIDE TO SWAN RIVER YACHT R.  
COURSE MAP**  
★ NOT FOR NAVIGATIONAL U

Scale 0 1 km



Copyright © 2019 Geng Pty Ltd ABN 17009461009

## IDENTIFICATION OF MARKS

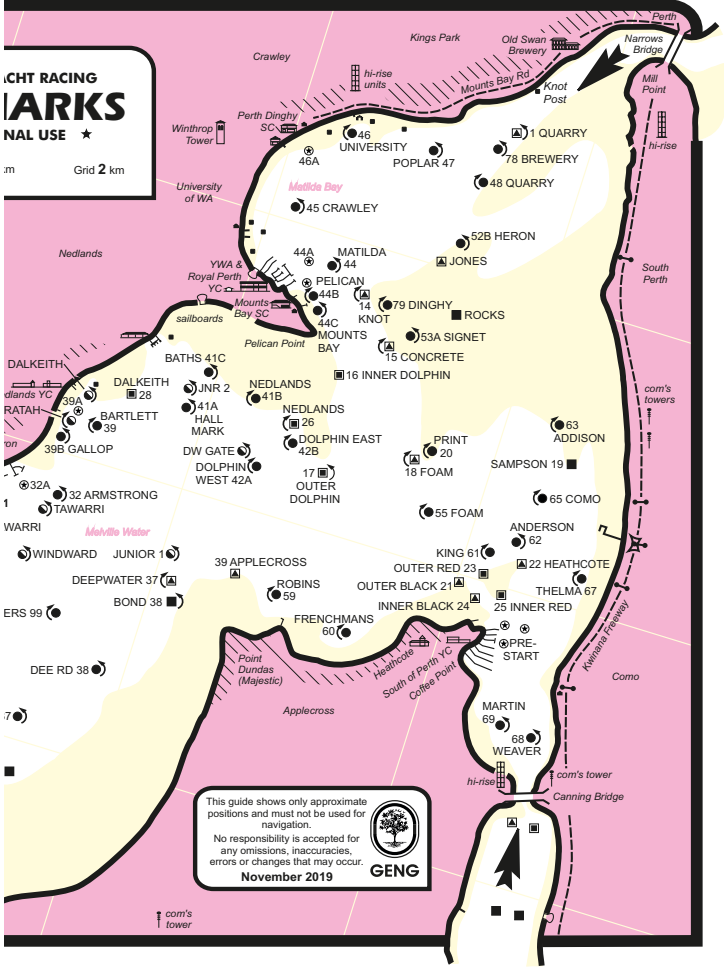
Armstrong Buoy	32	Foam Spit	18
Bishop Buoy	74	Hallmark Buoy	41A
Bond Spit	38	Knot Spit	14
Burnside Spit	58	Lucky bay Buoy	35B
Bricklanding A Buoy	33A	Miller Buoy	28
Bricklanding B Buoy	33B	Mosman Buoy	14
Club Buoy	33A	Mt Lyall Buoy	9
College Buoy	23	Outer Dolphin Spit	17
Como Buoy	65	Quarry Buoy	48
Deepwater Spit	37	Robins Buoy	59
Dee Road Buoy	38	Sanders	99
Dolphin East Buoy	42B	Squadron Buoy	37
Dolphin West Buoy	42A	Smith Buoy	35A
Dome Buoy	30	Suicide Buoy	13
Dunn Mark Buoy	36	University Buoy	46
Foam Buoy	55		



# BOAT RACING MARKS

NAVAL USE ★

Grid 2 km



## TWILIGHT COURSES

### Course No. 15

#### Pendant 1 over 5

- |     |   |              |
|-----|---|--------------|
| 1.  | Across Start Line (21A) in an Easterly Direction  |              |
| 2.  | Claremont Spit (56)                               | to Starboard |
| 3.  | Miller Buoy (28)                                  | to Port      |
| 4.  | Smith Buoy (35A)                                  | to Port      |
| 5.  | Lucky Bay Buoy (35B)                              | to Port      |
| 6.  | Squadron Buoy (37)                                | to Port      |
| 7.  | Middle (55) Scotch (57) Burnside (58)             | to Starboard |
| 8.  | College Buoy (23)                                 | to Starboard |
| 9.  | Black, Middle, Scotch & Burnside                  | to Starboard |
| 10. | Across Finish Line (21A) in an Easterly Direction |              |

### Course No. 16

#### Pendant 1 over 6

- |    |   |              |
|----|---|--------------|
| 1. | Across Start Line (21A) in an Easterly Direction          |              |
| 2. | Claremont Spit (56)                                       | to Starboard |
| 3. | Miller Buoy (28)  | to Port      |
| 4. | Black (54) Middle (55) Scotch (57)<br>Burnside (58) Spits | to Starboard |
| 5. | College Buoy (23)   | to Starboard |
| 6. | Black (54) Middle (55) Scotch (57)<br>Burnside (58) Spits | to Starboard |
| 7. | Across Finish Line (21A) in an Easterly Direction         |              |

### Course No. 17

#### Pendant 1 over 7

- |     |   |              |
|-----|---|--------------|
| 1.  | Across Start Line (21A) in an Easterly Direction          |              |
| 2.  | Claremont Spit (56)                                       | to Starboard |
| 3.  | Miller Buoy (28)  | to Port      |
| 4.  | Middle (55) Scotch (57)<br>Burnside (58) Spits            | to Starboard |
| 5.  | Claremont Spit (56)                                       | to Starboard |
| 6.  | Miller Buoy (28)  | To Port      |
| 7.  | Middle (55) Scotch (57) Burnside (58) Spits               | to Starboard |
| 8.  | College Buoy (23)   | To Starboard |
| 9.  | Black (54) Middle (55) Scotch (57)<br>Burnside (58) Spits | To Starboard |
| 10. | Across Finish Line (21A) in an Easterly Direction         |              |

# SAILING INSTRUCTIONS

## 1. RULES

### 1.1. ISAF RULES

All races shall be sailed under The Racing Rules of Sailing 2016 (RRS) together with the relevant prescriptions and safety rules of the AYF and Class Rules and Restrictions where applicable except as any of these are changed by these Sailing Instructions.

### 1.2. ALTERATIONS

Alterations to these Sailing Instructions shall be:

- 1.2.1. Issued as an addendum to the handicap sheet posted on the Club notice board or;
- 1.2.2. Posted on the notice board at the northern end of the main jetty one hour prior to the start of the race. Attention will be drawn to such posting by flag L on the start box hoist and one sound signal or;
- 1.2.3. Issued as Sailing Instructions for specific sailing events or;
- 1.2.4. By such other action as will comply with Rule 88.2 (C).

## 2. SIGNALS

### 2.1. VISUAL SIGNALS

All signals shall be visual signals made with flags and/or pennants. Signals will be accompanied by a sound signal, the purpose of which is to draw attention to the visual signal, and failure of a starting sound signal shall be disregarded.

## 3. COURSE

### 3.1. COURSES

The courses to be sailed by each Division or Class will be indicated by numeral pennants on the same hoist as the Warning Signal.

### 3.2. RIVER START

Flag R will signal a Westerly River Start (in the vicinity of Black Spit). A River Start Flag will be hoisted on the Start Box, no later than 30 minutes prior to the scheduled start time of the race.

### 3.3. VARIATION OF COURSES

The courses may vary as follows:

- 3.3.1. Westerly Club Start (no additional flags)  
Refer to the Course Instruction marked with the suffix W.
- 3.3.2. Easterly Club Start (Code Flag E displayed with the Warning signal)  
Refer to the Course Instruction marked with the suffix E.
- 3.3.3. River Start (Code Flag R displayed a minimum of 30 minutes prior to the start)  
Refer to the Course Instruction marked with the suffix R.

### 3.4. START LINE

- 3.4.1. Club Start  
A line between the triangle on the Start Box (with an Orange Flag flying above) and a Buoy (International orange, black diagonal stripes) laid approximately 100 m to SSE.
- 3.4.2. River Start  
A line between the signal mast of the Start Vessel, which will be anchored in the vicinity of Black Spit, and a buoy laid approximately 100 metres to the SE. A buoy may be trailed on a short line from the stern of the start boat in which case the buoy and its line forms part of the starting mark.

### 3.5. FINISH LINE

The Finish Line for all races is the Club Start Line.

### 3.6. LINES IN USE

A boat shall not pass in either direction through a Start or Finish Line in Use, other than her own (and then only if it is starting or finishing). A Line in Use will be identified by a conspicuous Orange Flag.

Alleged infringements of this Sailing Instruction may be protested under Rule 60 as a result of report from any Sailing Committee. The onus of satisfying the Protest Committee that the boat did not pass through the Line shall be with the protested boat.

### 3.7. PROHIBITED ZONE

A boat shall not enter a rectangular shaped area approximately 50 metres wide behind the Start Line before her warning signal.

A smaller red buoy may be laid behind the Start Line outer buoy indicating the extremity of this Prohibited Zone.

This rule does not apply before the Warning Signal for the first division to start.

### 3.8. VISUAL OBSTRUCTION OF THE START LINE

Except in an emergency, boats making fast to the fuelling jetty south of the Start Box shall not hoist sail after the warning signal for the first division.

After finishing, boats returning to moorings, pens or jetties shall not obstruct the view of the line from the Start Box, shall not re-cross the Finish Line, and shall not obstruct boats finishing.

### 3.9. NAVIGATION MARKS

All permanent navigation marks (Beacons and Spit Posts) are obstructions. Boats shall pass on the correct (deep-water) side of each mark except where specifically directed otherwise by these Sailing Instructions.

### 3.10. MARKS OF THE COURSE

All marks shall be rounded in the direction specified.

### 3.11. BRICKLANDING BUOYS 'A' AND 'B'

Boats shall not sail through a line joining Bricklanding Buoys A and B. (To ease congestion and improve safety the Swan River Racing Committee has adopted a proposal to group Bricklanding Buoys A & B as a pair, as though they form a 'traffic island'.)

### 3.12. SMITH AND LUCKY BAY BUOYS

Boats shall not sail through a line joining Smith and Lucky Bay Buoys (To ease congestion and improve safety the Swan River Racing Committee has adopted a proposal to group Smith and Lucky Bay Buoys as a pair, as though they form a 'traffic island'.)

## 4. START PROCEDURE

### 4.1. START

Races will be started using RRS Rule 26.

#### 4.1.1. Start Times for both Club and River Starts.

The first divisional start will be signalled at 1400 hours. Thereafter, following divisions will start at five minute intervals.

#### 4.1.2. Starting and Restarting

If any part of a boat's hull, crew or equipment is on the course side of the start line or its extensions after her warning signal, the boat shall be sailed to the pre-start side of the line around either end before starting. A boat sailing towards the pre-start side of the starting line or its extensions to start shall keep clear of a boat not doing so until she is completely on the pre-start side.

#### 4.1.3. Keep Clear

Boats whose 'Warning Signal' has not been made shall

keep clear of the starting area and all boats whose warning signal has been made.

#### 4.2. START SEQUENCE – NON-HANDICAP RACES

The start sequence for other than Handicap races is in accordance with rule 26.

When a General Recall has been signalled a new 'Warning Signal' will be made one minute after the lowering of flag 'First Substitute'. When a General Recall has been signalled the start of the succeeding classes shall follow the new start.

#### 4.3. HANDICAP START PROCEDURES

##### 4.3.1. Handicap Start

All Handicap Start Races will be started on the drop of a number defined as when the number disappears from sight, (eg: when 28 replaces 29, then: that is the drop of 29).

##### 4.3.2. Start Times

Individual boat start times will be posted on the club's notice board at least 30 minutes prior to race start.

##### 4.3.3. Warning

The warning signal will be made 5 minutes prior to the start and the course flag for each division will be displayed until the countdown is complete.

##### 4.3.4. Preparatory

The preparatory signal will be made 4 minutes prior to the start.

##### 4.3.5. Start

The starting signal will be one sound signal and the limit number will be displayed. 1 minute later the limit number will be dropped. The first designated boat will start and subsequent boats will start at the drop of their listed numbers.

At 1 minute intervals numbers counting down from the limit number to 0 will drop.

##### 4.3.6. Recalls and Premature Starts

No recall signals will be made.

This changes Rule 29.2. Premature starters who do not return will be scored "did not start" except those whose premature start is within one minute will be given a penalty of 5 minutes on their elapsed time.

NOTE: START ON THE DROP OF YOUR NUMBER

## 5. RACING

### 5.1. ABANDONMENT OR POSTPONEMENT OF RACES:

Will be signalled in accordance with Racing Rules of Sailing.

### 5.2. SHORTENED COURSE

5.2.1. Will be signalled in accordance with page 217 AYF Racing Rules of Sailing.

5.2.2. Courses may be shortened during a race by a sound signal from the Club Start Box when the leading boat is in the vicinity of Burnside Spit or from a Club Rescue craft in the vicinity of any other mark of the course.

5.2.3. When a course started in a Westerly direction is shortened at Burnside Spit, boats will proceed from Burnside Spit to Claremont Buoy (23A) and then proceed through the finish line in a Westerly direction.

5.2.4. When a course started in an Easterly direction is shortened at Burnside Spit, boats will proceed from Burnside Spit through the finish line in an Easterly Direction.

- 5.2.5. When the course is shortened at any other mark of the course, boats will proceed from that mark directly to Burnside Spit, keeping all Karrakatta Bank marks to starboard, and then proceed as directed in 5.2.3 or 5.2.4.
- 5.2.6. For Twilights the signal may be accompanied by red lights on the Club Start Box.

### 5.3. TIME LIMIT

The time limit for races shall be: -

For Dinghies	2 hours	30 minutes
For Seniors	3 hours	30 minutes
For Night Races	5 hours	

Should the leading boat in a Division finish within the time limit the race is valid for all other starters in that Division.

### 5.4. SAIL NUMBERS

Boats shall carry sail numbers in accordance with RRS Appendix G. Application for a limited dispensation may be made to the Sailing Committee not later than 30 minutes before the boat's scheduled start time.

### 5.5. MINIMUM OF STARTERS

Should less than four boats be preparing to start in a division, the race may be abandoned, cancelled, or combined with another fleet that has not started yet.

### 5.6. RETIREMENT

- 5.6.1. A retiring boat shall notify the starter either by hailing and receiving acknowledgement or by messenger at the first opportunity.
- 5.6.2. The Fleet or Class Flag shall be removed when a boat retires.

### 5.7. DISTINGUISHING FLAGS:

- 5.7.1. In order to be recognised as a starter a boat shall carry her Division (Naval Numeral) Fleet (Code) or Class Flag as appropriate on her backstay approximately 1.5 metres above the sheerline.

## 6. GENERAL PROVISION FOR YACHTS COMPETING IN CYC EVENTS

### 6.1. ELIGIBILITY TO COMPETE

- 6.1.1. Except those racing by invitation, all boats shall be skippered by a financial Senior member of Claremont Yacht Club.
- 6.1.2. Every member will be charged a trophy donation to cover trophy and race administration costs, \$10 per Senior, \$5 per Junior.
- 6.1.3. Consistency Points and handicaps will be allotted on the basis of the combination of boat and skipper.
- 6.1.4. Notification of a change of skipper shall be made to the Start Team at least one hour prior to the race's scheduled start time.
- 6.1.5. The Sailing Committee may at its sole discretion vary the handicap of a boat.
- 6.1.6. Novice Skippers must be financial CYC Member and have not skippered more than 2 races in that season.
- 6.1.7. Single Handed Skippers must be financial CYC Members and have an observer that does not participate in the race, but is able to take control in an emergency.
- 6.1.8. Rule 46 of the RRS requires that all crew that sail in more than 3 races (not including Twilights) must be a member of a club affiliated with the AYF. In the event that there is a successful protest concerning a breach of this rule, the penalty set will be at the discretion of the Protest

Committee. This may not apply in the case of races run by Associations or other Clubs.

- 6.1.9. Advertising on boats is to be within the limits specified for Category C under the ISAF Advertising Code [See RRS Rule 80, page 58]. In summary, this permits advertising in addition to the sailmakers and boat-builders marks on hulls, spars and sails without restriction for Club events. This may not apply in the case of races run by Associations or other Clubs.

## 6.2. DRESS

The minimum dress standard for a boat's crew is an all white shirt and shorts. The preferred dress standard is a uniform design and colour for shirts, shorts or long pants. The Sailing Committee encourages each yacht's crew to adopt a suitable uniform.

## 6.3. SAFETY

- 6.3.1. Boats sailing in river events shall comply with AYF Safety Regulations appropriate to the category of the race.
- 6.3.2. Category 7 is the standard for Keelboat daylight sailing within the confines of the Swan River.
- 6.3.3. The following additional equipment is required for Twilight and Night Races with the confines of the Swan River:
- Navigation Lights (as per Government Marine Safety Regulations).
  - Flares (2 orange and 2 red to Government Marine Safety Standards).
  - Personal Flotation Device types 1, 2 or 3 for all aboard.
  - VHF Radio or Mobile Phone.
  - Functioning Waterproof Torch.
  - Regulations for Prevention of Collisions at Sea.
- 6.3.4. CYC will also implement the following during Twilight and Night races:
- Advertised phone numbers manned by race control during racing.
  - Have a rescue boat able to be manned for emergency with suitable communication facilities.
  - Place a limit of 25 knots (average) on wind speeds above which racing will be abandoned.
- 6.3.5. It is the Skipper's responsibility to ensure that his/her boat complies with the AYF Safety Regulations appropriate to the category of the race.
- 6.3.6. All skippers shall complete an AFY Category 7 Safety Card and forward a signed copy to the Club prior to competing in any Club event.
- 6.3.7. The Sailing Committee at its discretion may undertake random safety inspections to ensure that vessels are appropriately equipped.
- 6.3.8. All boats other than dinghies designed for single handed sailing shall be crewed by a minimum of two persons, each of whom shall be capable of handling the vessel alone in an emergency.

## 6.4. RESPONSIBILITY

- 6.4.1. The safety of a boat and her crew is the sole and inescapable responsibility of the owner.
- 6.4.2. Attention shall be drawn to RRS Rule 4 'The responsibility for a boat's decision to participate in a race or to continue racing is hers alone'.
- 6.4.3. No responsibility will be accepted by the Claremont Yacht

Club or its Sailing Committee for the seaworthiness of a boat for which an entry is accepted, for sufficiency or adequacy of her equipment, or for the safety of her crew.

6.4.4. Owners are advised to adequately insure against loss or damage to boats and equipment and injury to crew however occurring.

#### 6.5. CLUB BURGEE

6.5.1. Skippers are urged to fly the Club Burgee at all times. The Club Burgee should be flown from the highest point on the mast or the starboard spreader but never from the backstay.

6.5.2. The backstay should be used for racing flags only ie: Class Flag, or Protest Flag.

6.5.3. The national flag may be flown from the stern of the boat when not racing.

### 7. PROTESTS

The intent to protest must be indicated in accordance with Part 5, Rules 60 and 61 of the Racing Rules of Sailing. All protests submitted to the Race Committee under Part 2 of the Racing Rules will be offered the process of Mediation.

Protests shall be written on forms available at the race office and lodged there within 60 minutes after the finishing time of the last boat in the protesting boat's fleet.

#### 7.1. ARBITRATION

Arbitration will be offered for all protests lodged in accordance with Rule 61 alleging infringements of a Rule in part 2 of the Racing Rules. A mediation hearing will be held as soon as practicable subsequent to protest being lodged and prior to any hearing of that protest.

The Race Committee will appoint a mediator. The mediator will notify the time and place of the mediation hearing. The mediator may inform the parties to the protest of the time and place of the mediation, verbally.

The arbitrator will decide the manner in which testimony is given.

One representative only, of both the protestor and the protestee, may attend the mediation hearing. No witnesses will be allowed at the mediation hearing.

A Mediation, once closed shall not be re-opened. No conclusion of the mediation process shall be subject to an appeal or grounds for redress. One of the following conclusions will be reached by the parties involved:

7.1.1. The protest was not a valid protest in that it did not comply with Rule 61.

The protestor shall then withdraw the protest.

7.1.2. There was no infringement of the Rules.

The protestor shall withdraw the protest.

7.1.3. There was an infringement of the rules but the protested boat exonerated itself.

In accordance with the Rules, the protest shall be withdrawn.

7.1.4. There has been an infringement by one or more boats involved.

The infringing boat(s) may accept a penalty equal to 50% of the penalty that would result from disqualification and, if so accepted, the protestor shall withdraw the protest. This changes rule 63.1.

If the arbitration process is unable to reach any of the foregoing conclusions, the protest shall proceed to a protest hearing. The arbitrator may be part of such a protest committee, may the arbitrator be called as a



witness to the protest committee.

7.2. ALTERNATIVE PENALTIES

- 7.2.1. The 720 \* Turns Penalty  
RRS Rule 44.2 shall apply.

**8. SCORING**

8.1. CLUB CHAMPIONSHIP FOR CLASS YACHTS

- 8.1.1. SS22's shall be sailed over eight heats.  
8.1.2. Competitors in the Club Championship are allowed to drop their worst race.  
8.1.3. The Championship shall be decided in accordance with RRS Section I, Appendix A "Olympic Low-Point Scoring System".

8.2. CONSISTENCY TROPHY

- 8.2.1. The allocation of Consistency Points will be arrived at by scoring in all consistency races conducted during the Sailing Season.  
8.2.2. These races will be designated by an asterix (\*) in the Sailing Program.  
8.2.3. Competitors in the Club Consistency are allowed to drop their worst 2 races.  
8.2.4. Special events are not included.  
8.2.5. Any boat that chooses not to sail in a scheduled class/division race and sails in a fleet other than their own will NOT be awarded consistency points for that race.  
8.2.6. Any boat that chooses not to sail in a scheduled class/division race and sails in a fleet other than their own shall race with a 1.00 handicap for that race. If the boat sails more than 4 races in that same fleet, it shall receive a comparable handicap for that fleet.  
8.2.7. For the combination of fleets due to insufficient numbers there will be separate results generated for each fleet (minimum of 3 boats per fleet).  
8.2.8. A boat sailing in a Class Association event or representing CYC at other events may claim her average consistency points, if absent from a CYC Consistency race.  
8.2.9. Such a claim shall be made to the Sailing Committee, before or within 48 hours after that event. The decision to award such points shall be at the absolute discretion of the Sailing Committee.  
8.2.10. In each race the first boat on the handicap result shall be allotted points equal to the total number of boats competing in the fleet for that race. Each boat will be awarded one point less for each place the boat is behind the first boat. Eg. if 15 boats sail in the race, the first place getter will receive 15 points and a boat that finishes 6th in a race the boat will be awarded 10 points.  
8.2.11. In addition to these points all boats starting shall receive one point and all boats finishing shall receive a further one point. A boat that starts and retires or is disqualified shall receive one less point than the finishing position equal to the number of starters in the race.  
8.2.12. The boats with the highest aggregate of points at the end of the season shall be the winners of the Consistency Trophies in each Division or Class.

## 9. TWILIGHT AND NIGHT RACES

- 9.1. Boats shall comply with the safety requirements detailed in Paragraph 6.3.
- 9.2. In Twilight races only working sails comprising main and headsails may be carried. Headsails may be winged on a spinnaker pole.
- 9.3. A boat shall not luff another boat before the starting signal, and thereafter shall not sail above a proper course.
- 9.4. Twilight Race starts may be separated into 2 fleets at the discretion of the Starter; "A" Fleet consisting of Div 1 & 2 boats and "B" Fleet consisting of all other boats. Otherwise a "Combined" Fleet will be started.
- 9.5. The Warning Signal for the "Combined" or "B" Fleet will be made at 1820 hours for Twilight Races. The Start Signal for the "Combined" or "B" Fleet and the Warning Signal for "A" Fleet will be at 1825 hours. The Start Signal for "A" Fleet will be at 1830 hours.
- 9.6. Skippers are reminded that Twilight Races are social occasions. There are often people out there not experienced in sailing and can become distressed in strong breezes or when boats are in close proximity to each other.
- 9.7. Boats shall illuminate their Sail No. when finishing a twilight race so as to assist the duty Start Team in recording an accurate finish time.

# DINGHY SAILING INSTRUCTIONS

## 1. Rules

All races will be governed by the 2017-2020 Racing Rules of Sailing (RRS), the prescriptions of the AYF, and the rules of the participating Classes, (except as any of these are changed by these sailing instructions). By starting, Competitors are deemed to comply with RRS Part1.

## 2. Entries

Eligible boats may enter by completing sign on forms in the Club Lower Deck showing Sail Number, Name of Skipper, sail type (Full Rig, Radial or 4.7 if a Laser) and mobile phone number if applicable. Entry is open to all dinghy classes by prior nomination arrangement with the organising authority.

## 3. Notice to Competitors

Notices to competitors will be posted on the official notice board located inside the Lower Deck at Claremont Yacht Club.

## 4. Changes in Sailing Instructions

Any changes to the Sailing Instructions will be posted before 0900 hours on the day of racing.

## 5. Signals made Ashore

5.1 Signals made ashore will be displayed on the flag pole adjacent to the main jetty of Claremont Yacht Club.

5.2 Flag "AP", (See Appendix A3 Other Flags ) with two sound signals (one sound signal when lowered) means- "The race is postponed". All competitors shall stay ashore until advised by the Race committee. The Warning signal will be made not less than 20 minutes after the "AP" is lowered.

## 6. Schedule of Races

6.1 Time of first warning signal 1000

6.2 No warning signal will be made after 1145 on the day of racing.

## 7. Class Flags

*Laser*: Full rig, Radial & 4.7. White background with red Laser emblem as per Full Rig class flag Appendix A3. If numbers are sufficient, Lasers, Radial and 4.7 may have their own start. (Refer point 4 Sailing Instructions). If so then the following class flags will be used (See Appendix A3 Other Flags)

*Mirror* - White background with black Mirror emblem.

*Optimist* - White flag with black Optimist emblem.

## 8. Racing Areas

The racing area will be on Freshwater Bay, in the vicinity of Karrakatta Bank.

## 9. The Course

9.1 The course sheet shows the course including the order in which marks are to be rounded, and the side on which each mark is to be left. The course sheets are located in the Lower Deck of Claremont Yacht Club. (Also see Appendix A1 Course Layout).

9.2 Marks 1, 2, 3 and 4 will be pink/orange ball buoys or black and yellow for LASER/MIRROR/420 and Yellow ball buoys for the Optimist fleet. These will be set inside the LASER/MIRROR/420 buoys.

9.3 New marks when used in accordance with Instruction 13, Change of Course After the Start, will be white pins with a C flag (See Appendix A3 Other Flags) or as directed by race Officers.

- 9.4 The port end starting and finishing mark will be a white pin with a yellow flag or the club start mark.
- 9.5 Shortened Course.  
When code flag 'S' (See Appendix A3 Other Flags) is displayed from a committee boat near to a rounding mark, boats shall leave that on the required side and proceed directly to the finishing line.
- 9.6 Line in Use.  
When an orange "line in use" flag is displayed from the mast of a start boat it signifies that the respective starting line is in use. When an orange or blue "on station" flag is displayed from the mast of a start boat it signifies that the respective finishing line is in use [see Appendix 2]. Boats are not permitted to cross the start or finish when the orange or blue flags are displayed. This rule does not apply during the period from the boats 'warning signal' until she is clear of the starting area after starting, or when finishing.

## 10. The Start

- 10.1 Races will be started using Rule 26.
- 10.2 Races using course 2 or 4 will be started using a 3 minute start and the 'U' Flag.

Minutes before starting signal	Visual signal	Sound signal	Means
3	Class flag	One	Warning signal
2	U flag	One	Preparatory signal
1	Preparatory flag removed	One long	One minute
0	Class flag removed	One	Starting signal

Races subsequent to the first race will commence the 3 minute start sequence 2 minutes after the last boat completes the course of the earlier race

- 10.3 The starting line will be between a mast displaying an orange flag on the Race Committee Boat at the starboard end and the port-end starting mark. A buoy may be attached to the stern of the Race Committee boat, either directly secured or floated on a short line. Such buoy and its line shall form part of the starting boat for the purposes of Rule 31, Touching a Mark.
- 10.4 Boats whose Warning Signal has not been made shall keep clear of the starting area and of all boats whose Warning Signal has been made.
- 10.5 A boat shall not start later than 5 minutes after her Starting Signal.
- 10.6 Individual recall. RRS 29.1 apply Flag 'X' [see Appendix 2].
- 10.7 General Recall. RRS 29.2 apply Flag 1st substitute [see Appendix 2].

## 11. Alternative Penalties

No penalties apply for touching a soft mark, excluding start marks. For all other penalties a one-turn penalty applies.

## 12. Handicap Start Procedures

### 12.1 Handicap Start:

All Handicap Start Races will be started on the drop of a number defined as when the number disappears from sight, (eg: when 28 replaces 29, then: that is the drop of 29).

### 12.2 Start Times:

Individual boat start times will be posted on the club's notice board at least 30 minutes prior to race start.

### 12.3 Warning:

The warning signal will be made 5 minutes prior to the start.

### 12.4 Preparatory:

The preparatory signal will be made 4 minutes prior to the start.

### 12.5 Start: a) The starting signal will be one sound signal and the limit number will be displayed. 60 seconds later the limit number will be dropped. The first designated boat will start and subsequent boats will start at the drop of their listed numbers.

b) At 60 second intervals, numbers counting down from the limit number to 0 will drop.

### 12.6 Recalls and Premature Starts:

No recall signals will be made. This changes Rule 29.2.

Premature starters which do not return will be scored "did not start" except those whose premature start is within one minute will be given a penalty of 5 minutes on their elapsed time.

NOTE: START ON THE DROP OF YOUR NUMBER

## 13. Change of Course after the Start

A change of course after the start will be signaled before the leading boat has begun the leg, although the new mark may not be in position. Any mark to be rounded after rounding the new mark may be relocated to maintain the original course configuration.

## 14. The Finish

The Finishing Line will be between a staff displaying an orange or blue flag on a Race Committee Boat and the port-end finishing mark.

## 15. Boats Retiring

Boats retiring shall notify a committee boat or a Race Official as soon as possible. Boats failing to give notice may be disqualified at the discretion of the Protest committee.

## 16. Time Limit

The time limit will be 2 hours for all classes. Boats failing to finish within 30 minutes after the first boat finish or within the time limit, whichever is later, will be scored "Did Not Finish". This changes rule 35.

## 17. Protests

17.1 Protests shall be written on forms available and delivered within 30 minutes after the time of the last boats finish.

17.2 All protests will under go mediation in accordance with the Claremont Yacht club Sailing Instructions and RRS 61.

17.3 Protests will be heard in approximately the order of receipt as soon as possible.

17.4 Protest notices will be posted within 30 minutes of the protest time limit to inform competitors where and when there is a hearing in which they are parties to a hearing or named as a witness.

17.5 Decisions of the protest committee will be final as provided in rule 70.4.

## **18. Scoring**

The Modified Low Point scoring system, RRS Appendix A, will apply to all club championships and windward series races. Modified high point score will apply to the consistency trophy.

## **19. Responsibilities**

- 19.1 All those taking part in racing at Claremont Yacht Club do so at their own risk and responsibility.
- 19.2 The organising authority, any of its committees and the host club is not responsible for the seaworthiness of a boat whose entry is accepted or the sufficiency or adequacy of its equipment.
- 19.3 Attention is drawn to Fundamental Rule 4 of the Racing Rules of Sailing, which states "The responsibility for a boat's decision to participate in a race or to continue racing is hers alone".

## **20. Safety**

All skippers and crew must wear approved buoyancy vests type 2. All boats shall comply with the requirements of the AYF special requirements, YA SR part 2 and RRS 40. In the event of strong winds or thunderstorms the Race Committee at their discretion may order part or all of the racing fleet ashore. All skippers shall obey such an order immediately.

## **21. Prizes**

Pennants will be awarded to each member of the crews placing fastest, first, second and third.  
Should there be less than 3 boats finish the race only a fastest and first place pennant will be awarded.

## **22. Coaching**

The club coach and or any other appointed person by the race committee can give advice to some, any or all competitors in a class. This will not be regarded as a breach of RRS 41.





# CLAREMONT YACHT CLUB INC.

4 Victoria Ave, Claremont WA 6010  
PO Box 11, Claremont WA 6910

Phone: 9384 8226

Email: [reception@claremontyachtclub.org.au](mailto:reception@claremontyachtclub.org.au)

[claremontyachtclub.org.au](http://claremontyachtclub.org.au)